

Operation Procedure of PolViewPC

Step 1:

Take the GPS receiver outside where it has a clear view of the sky and away from tall trees, buildings, or other obstructions.

Step 2:

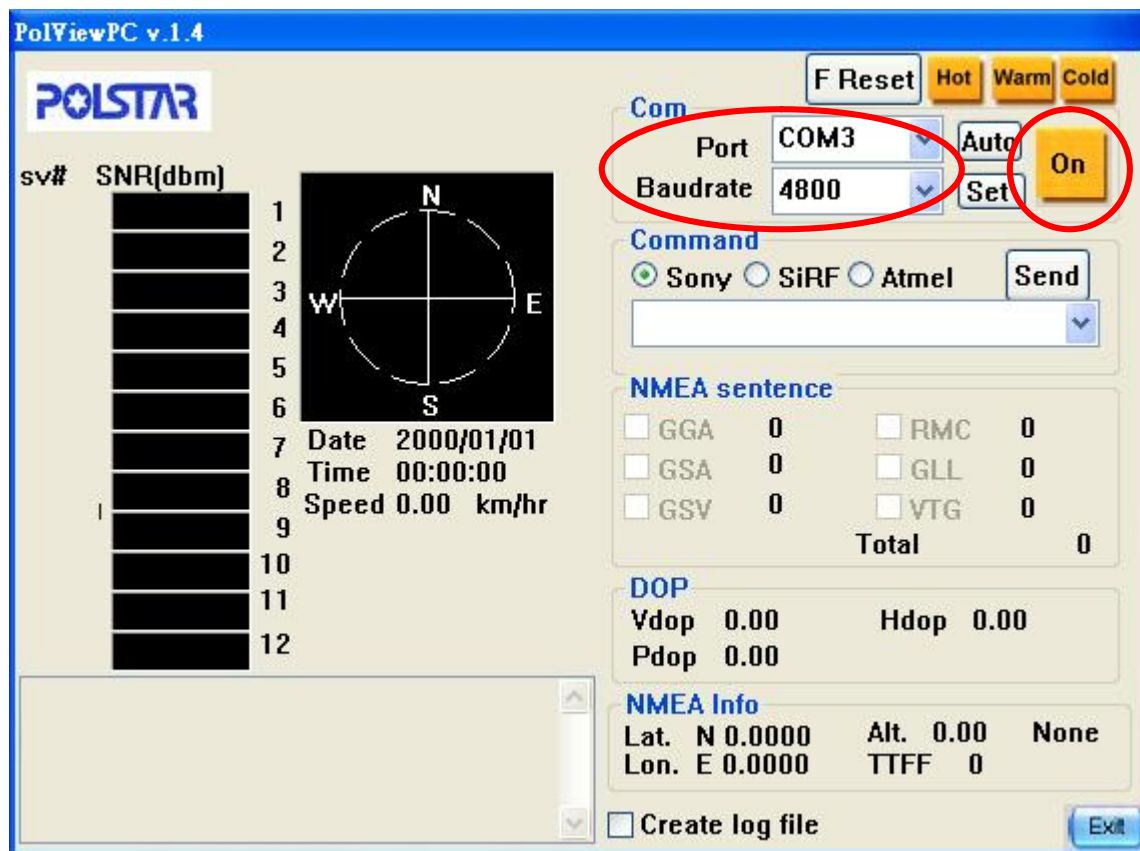
Execute the PolViewPC tool on PC.

Step 3:

Set baud rate and com port (output port)

Step 4:

Click "on" icon



Note:

1. Make sure the numbers of satellite are greater than 3 and the strength of satellite signal are greater than 40, and then GPS receiver should get fixed within 3 minutes.